

**ITEM 6. ITEM FOR COMMITTEE INFORMATION – PARKING – BUS ZONE –
 CAMPBELL STREET HAYMARKET**

TRIM RECORD NO: 2015/500106

RECOMMENDATION

It is recommended that the Committee endorse the following reallocation of kerb space on the southern side of Campbell Street, Haymarket, west of Castlereagh Street:

- (A) Between the points 26.0 metres and 67.0 metres (seven spaces) as “Bus Zone”; and
- (B) The City, in conjunction with TfNSW, to review the provision of bus parking in Campbell Street, between Pitt and Castlereagh Streets, six months after implementation.

DECISION

The Committee carried the recommendation unanimously out-of-session on 30 September 2015.

BACKGROUND

On 19 December 2013, the NSW Government adopted the Sydney City Centre Access Strategy (Access Strategy). The Access Strategy provides a clear direction for how all the different transport modes will work together in the Sydney CBD to reduce congestion, provide for future growth and improve the customer experience

The Sydney City Centre Bus Plan (SCCBP) forms part of a suite of transport improvements associated with the Access Strategy and includes:

- New dedicated Bus Lanes, Bus Stops and shelters;
- Modifying kerbs and footpaths, line markings and medians; and
- Removing and relocating some taxi ranks, Loading Zones and on-street parking spaces.

The SCCBP aims to:

- Provide a more efficient bus network that is easier for customers to use and understand;
- Create bus corridors within the CBD that improve links to key destinations and improve connectivity with other transport modes; and
- Relocate existing bus routes on George Street to enable delivery of the CBD Light Rail.

The SCCBP will be delivered by Roads and Maritime Services (RMS), in conjunction with Transport for New South Wales (TfNSW) and the City of Sydney.

COMMENTS

The kerb space on the southern side of Campbell Street, Haymarket, between Pitt and Castlereagh Streets is currently signposted as “Loading Zone Ticket” during weekday business hours and Saturday mornings and “4P Ticket” at other times

The proposed parking change seeks support to reallocate on-street parking to provide additional layover capacity for new bus services operating in the southern part of the Sydney CBD.

CONSULTATION

Given that the changes are required to facilitate the implementation of the NSW Government’s Sydney City Centre Bus Plan (SCCBP) on 4 October 2015, there is no scope in the project to *not* implement the changes should they not be supported by affected stakeholders.

TfNSW will however notify local residents and businesses of the parking change prior to implementation.

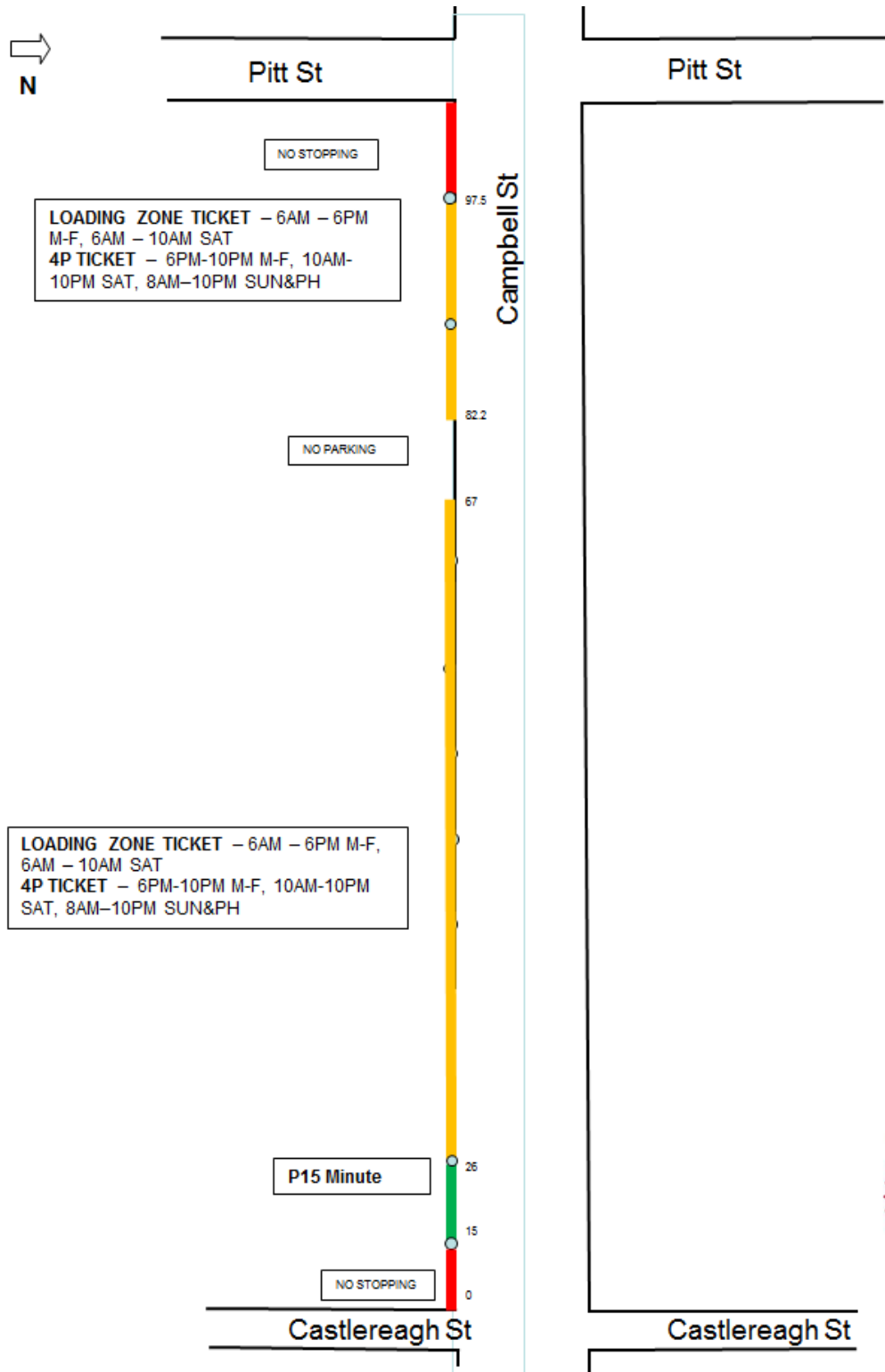
FINANCIAL

The Access Strategy is fully funded by the NSW Government.

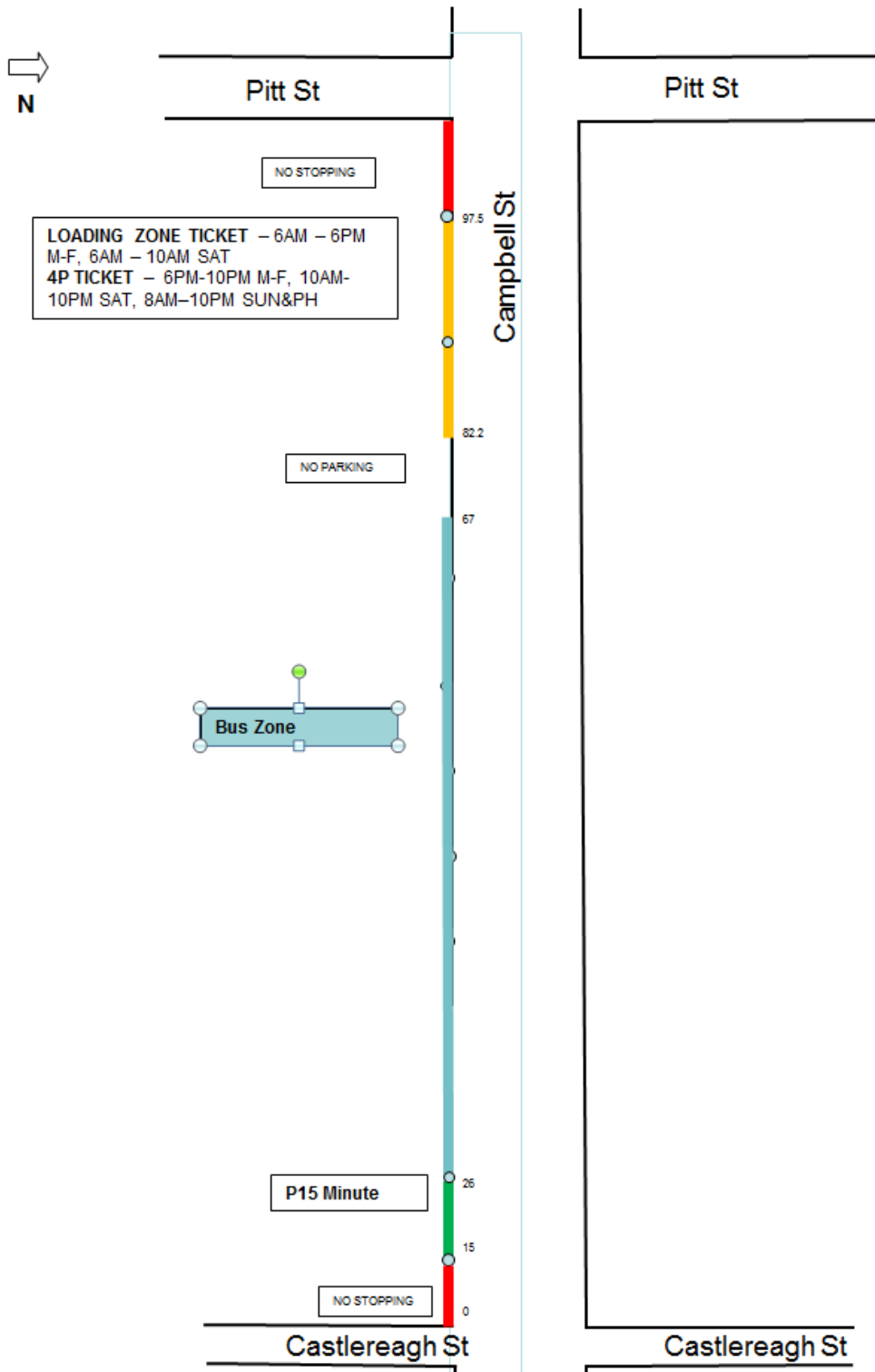
ATTACHMENTS

Item for Committee Information – Parking – Bus Zone – Campbell Street Haymarket

Lisa McGill, Senior CBD Precinct Planning Manager, Transport for NSW



southern side of Campbell St btw Castlereagh St and Pitt St – Parking restrictions



southern side of Campbell St btw Castlereagh St and Pitt St – Proposed Parking restrictions